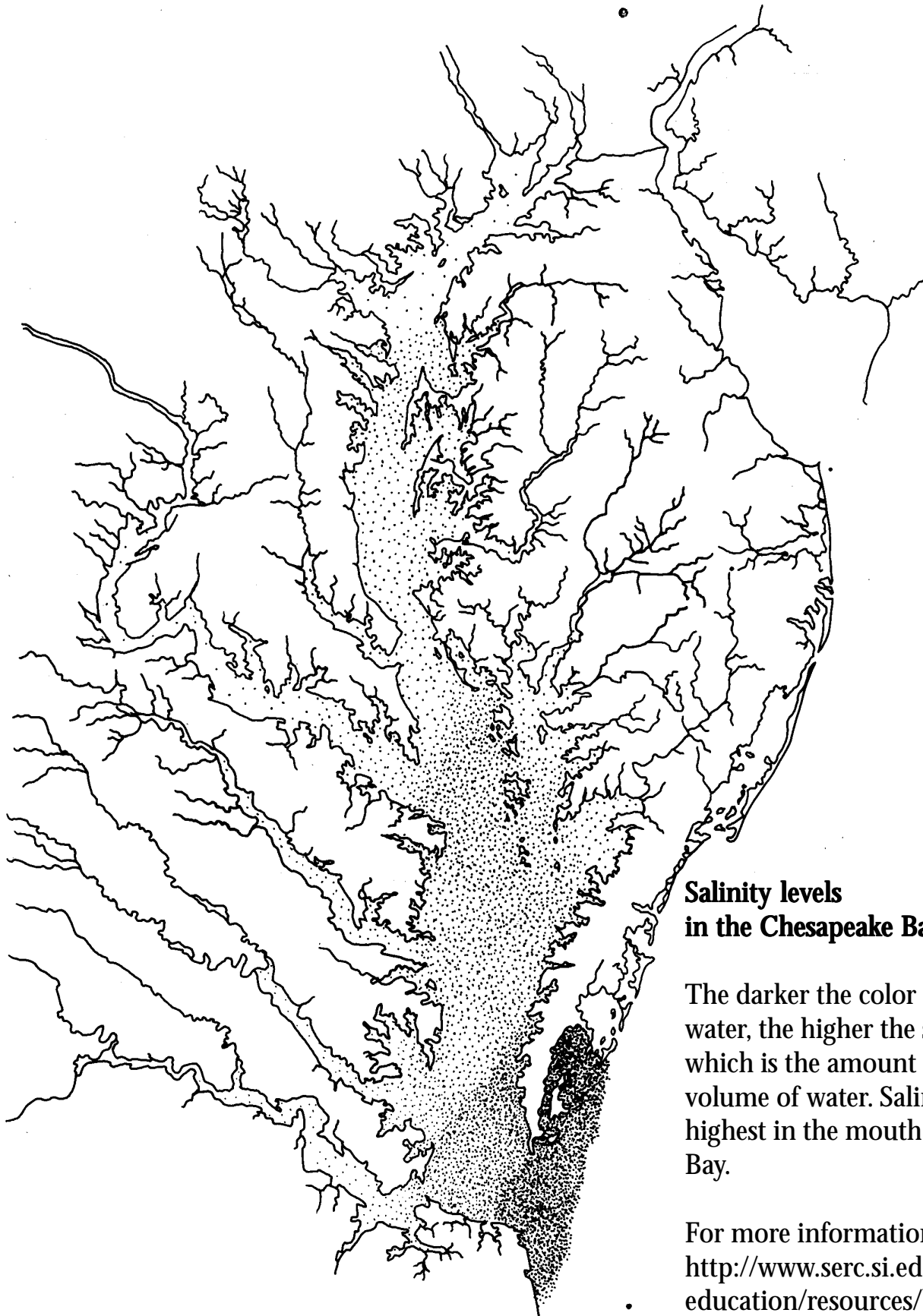


**Migration pattern
of the blue crab**

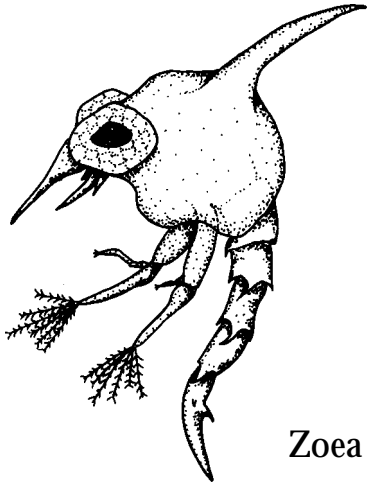
For more information, visit
[http://www.serc.si.edu/
education/resources/bluecrab](http://www.serc.si.edu/education/resources/bluecrab)



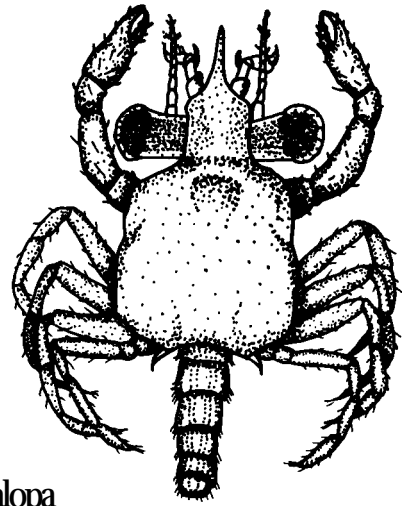
**Salinity levels
in the Chesapeake Bay**

The darker the color of the water, the higher the salinity, which is the amount of salt per volume of water. Salinity is highest in the mouth of the Bay.

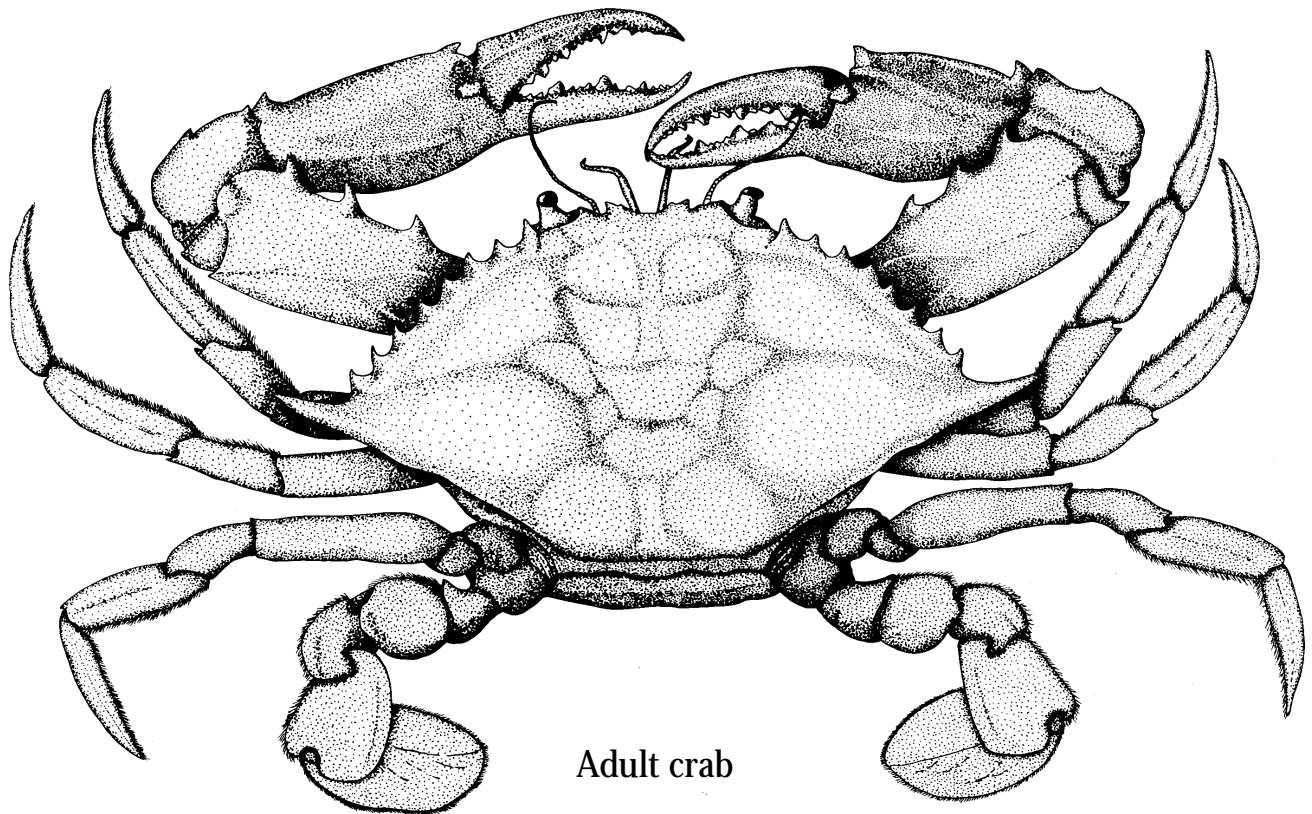
For more information, visit
<http://www.serc.si.edu/education/resources/bluecrab>



Zoea



Megalopa



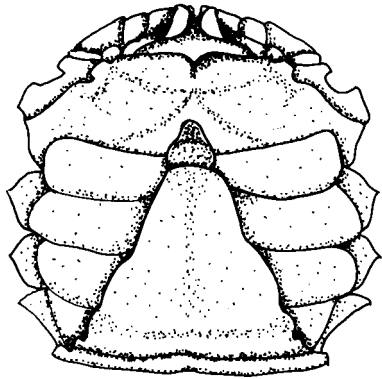
Adult crab

Blue crab: *Callinectes sapidus*

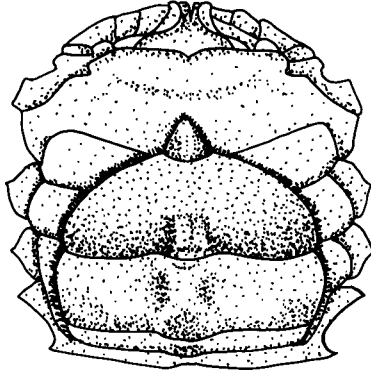
For more information about the blue crab, visit
<http://www.serc.si.edu/education/resources/bluecrab>



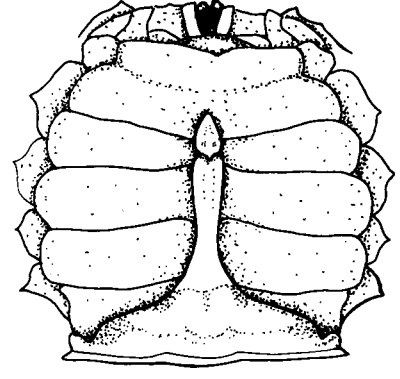
Smithsonian Environmental
Research Center



Immature Female



Mature Female



Male

Blue crab abdomen

For more information, visit
<http://www.serc.si.edu/education/resources/bluecrab>